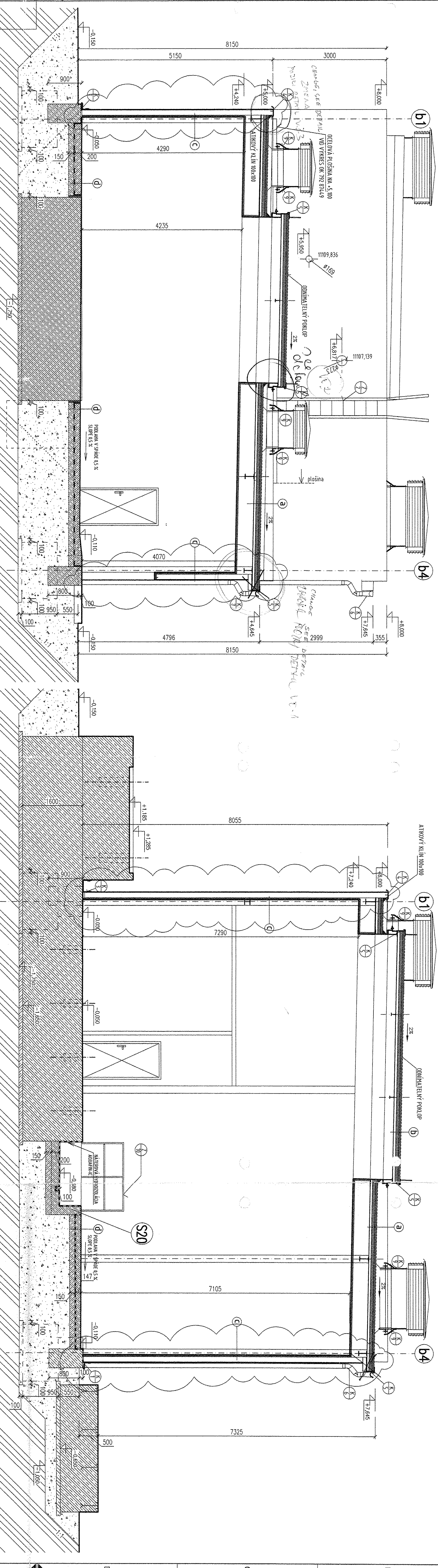


REZ A-A, C-C
SECTION A-A, C-C

REZ C-C
SECTION C-C



REZ A-A
SECTION A-A

MATERIÁLLOVE SKLADBY

- (a)**

 - HYDROIZOLÁCIA SIKAPLAN 15G
 - HYDROINSULATION SIKAPLAN 15G
 - NOBASIL JPS-T 60mm 163kg/m
 - THERMALINSULATION NOBASIL JPS-T TH 60mm
 - NOBASIL JPS-T 80mm 150kg/m
 - THERMALINSULATION NOBASIL JPS-T TH 80mm
 - PADOZABRANA - FOLIA JUTAFOL N 110
 - VAPOR BARRIER "JUTAFOL" N 110
 - TRAPEZOVÝ PROFIL 150 DOD. OK
 - TRAPEZOID SHEET 150
 - TRAPEZOVÝ PROFIL 150 DOD. OK
 - TRAPEZOID SHEET 150
 - NOBASIL OCEL. KONSTRUKČIA
 - STEEL BEARING STRUCTURE

(b)

 - HYDROIZOLÁCIA SIKAPLAN 15G
 - HYDROINSULATION SIKAPLAN 15G
 - NOBASIL JPS-T 60mm 163kg/m
 - THERMALINSULATION NOBASIL JPS-T TH 60mm
 - NOBASIL JPS-T 80mm 150kg/m
 - THERMALINSULATION NOBASIL JPS-T TH 80mm
 - PADOZABRANA - FOLIA JUTAFOL N 110
 - VAPOR BARRIER "JUTAFOL" N 110
 - TRAPEZOVÝ PROFIL 150 DOD. OK
 - TRAPEZOID SHEET 150
 - TRAPEZOVÝ PROFIL 150 DOD. OK
 - TRAPEZOID SHEET 150
 - NOBASIL OCEL. KONSTRUKČIA
 - STEEL BEARING STRUCTURE

(c)

 - CEMENTOVÝ NASTRIEK PRÍRODNEJ FARBY
 - CEMENT FINISH OF NATURAL COLOR
 - PREKASŤOVANÉ PANELE 23 hr. 120mm
 - PRECAST CONCRETE PANELS
 - PADOZABRANA JUTAFOL N 110 STÁNDAR SPCMA
 - VAPOR BARRIER "JUTAFOL" N 110 STANDARD SPECMA
 - OBRAD OBERU H=50mm (AKUSTICKÁ IZOLÁCIA)
 - WORKING FACING (ACOUSTIC INSULATION)
 - OSTATNÝ PLETCH
 - REST OF SHEETING
 - 23 DOSKA - (C 16/20 hr.200-141mm), VYSTUŽENIA SEŤOVANOU
 - CONCRETE - (C 16/20 TH.200-141mm), WITH SUPPORI
 - GEOTEXTIL - TARMATX
 - GEOTEXTILE "TARMATX"
 - GEOTEXTIL - TARMATX
 - GEOTEXTILE "TARMATX"
 - HYDROIZOLÁCIA PIRBAPOL 806
 - HYDROINSULATION TARMATOL 806"
 - PODKLADNÝ BETÓN
 - CONCRETE - (C 12/15 TH. 150mm)
 - ZHŤNUTÝ SÍKOPROSEK NA DÍ MIN 0,9
 - RAMMED GRAVEL-SAND

This drawing is protected by copyright.
It may not be copied or used without our written
authorization and it is strictly prohibited
to disclose it to any third parties.

LEGENDA HMOT

- | | |
|--|--|
| | PROSTÝ BETON B15 (C12/15) |
| | ZTLUMENÝ STŘEŠNÍČEK NA ID MIN 0,9 |
| | RÁMCOVÝ GROUT-SAND |
| | PASTY TERÉN |
| | EXISTING GROUND |
| | ŽELEZOBETON B 20 (C16/20) |
| | CONCRETE C 16/20 WITH SUPPORT |
| | SPRÁVNÝ ŽELEZNÝ BETON S VYZTUŽENÍM Z OCELI |

LEVELS

TOP OF INTERNAL ROADS:	225,00m n.m.
TOP OF FOUNDATION:	225,10m
BOTTOM OF STEEL STRUCTURE:	225,15m = ±0,00
±0,000=	225,150 m n.m
	jadran

REALIZAČNÝ PROJEKT JE SPRACOVANÝ POD Z.Č. 3821.2.002.AS-

HS HSV s.r.o. KOŠICE
Technický úsek



FREIGABE FÜR CONSTRUCTOR



Pa 44-11-05

10m

$\pm 0,00 = 225,15m$

DPC

NORTH
PLANT

 CHPK Engineering s.r.o.		 AIR LIQUIDE ™	
REPAGES: 79	REPLACED BY: 79...		
B A 0		ING. NODKA 04.08.2005 ING. PANIK	
REV DATE		ING. PAULIKO 04.08.2005 ING. PAULIKO	
NAME		CHECKED	
JOB CODE: K70101		SCALE 1:50	
REFERENCE: ASU No.9 KOŠICE		ORIGINAL FORMAT A1	
TITLE: UNIT 1 - COMPRESSOR BUILDING SO 002 KOMPREZORNA STANICA-KEZ A-A, C-C SECTION A-A, C-C		SHEET: 001 OF 001 SHEETS	
DRAWING NO.: 792.87446		REV. A	